

Every effort has been made to ensure the accuracy of the information contained in this brochure at the time of going to press. The University reserves the right, however, to introduce changes to the information given including the addition, withdrawal or restructuring of degree programmes.

Location

The University is located on a single campus landscaped site on the outskirts of Guildford. London is only 40 minutes away by train and its major airports of Heathrow and Gatwick are both within easy reach giving ready access from all over the world. The UK motorway network (M25, M3, M4, M40 etc) is within easy access via the A3 trunk road.

By road

Guildford is 29 miles southwest of London, on the A3 London-Portsmouth road. Follow the signs for the University and/or Guildford Cathedral and at the Cathedral roundabout, take the University exit.

By rail

Guildford is on the main line between London Waterloo and Portsmouth. Half-hourly train services run from Guildford to Waterloo, with journey times of approximately 40 minutes, giving immediate access to the extensive cultural and entertainment facilities of the capital.

By Eurostar

London Waterloo is the terminus for the Eurostar service to/from Paris and Brussels.

By air

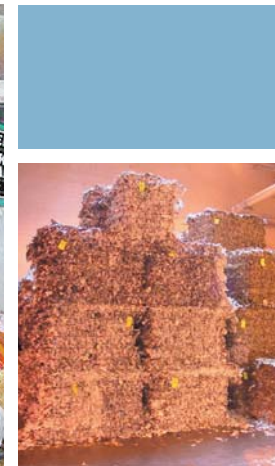
Guildford is conveniently placed for both Heathrow and Gatwick airports (see map) and may be reached by Railair coach link from Heathrow airport or directly by rail from Gatwick airport.



Accommodation

Full-time postgraduate students paying overseas fees are guaranteed a place in University accommodation, provided their fees are paid by 1 August. Full-time UK/EU students will be eligible to apply for University accommodation. Although places are limited, students stand a good chance of securing a place if programme fees are paid by 1 August. Accommodation is provided in self-catering, single study bedrooms, many en suite and all with online facilities to the internet and UniS computer systems.

Further information can be found on the University website at: www.surrey.ac.uk/corporate/visitors



The University for **S**uccess



Environmental Programme Centre for Environmental Strategy

For further information contact:

MSc Course Administrator
Centre for Environmental Strategy
School of Engineering (D3)
University of Surrey
Guildford, Surrey
GU2 7XH, UK

Tel: +44 (0)1483 689047
Fax: +44 (0)1483 686671
Email: ces-pgt@surrey.ac.uk

www.surrey.ac.uk/ces

Full-time and part-time
postgraduate programme
School of Engineering

UniS
University of Surrey
Guildford



Environmental Programme

A Pioneering Programme

The postgraduate modular MSc programme was set up in 1997 to offer innovative, solution-driven thinking to environmental issues. The programme is housed in the Centre for Environmental Strategy (CES), which is a highly rated research and teaching centre. The Centre is based within the School of Engineering at the University of Surrey, and accommodates a wide range of disciplines devoted to resolving an array of environmental problems.

The Masters programme in CES challenges students to think systematically and creatively, and act pragmatically. It occupies a unique place in the UK and the EU for preparing a new generation of environmental professionals who are able to implement ISO14001, undertake Sustainability Assessments and Life Cycle Assessments, and introduce Corporate Social Responsibility programmes into organisations.

Programmes of study at CES are, by design, multidisciplinary, involving the application of a wide range of natural and social sciences to problems of resource use and environmental management. The programme is organised and delivered by the Centre's own staff and leading experts from industry, public agencies and academic partners. Many of the case studies and lecturers are drawn from over 60 organisations that have sponsored our research over the past ten years.

Accreditation

The programme is approved by the Institute of Environmental Management and Assessment (IEMA). It offers a direct route to Associate Membership status with the IEMA. Most students leave the programme with a Masters degree and an IEMA associate membership certificate.

Flexibility

The programme provides both full-time and flexible part-time training for working professionals and practitioners in the various branches of the environment field. The length of study for full-time students is 12 months. Part-time candidates can begin their chosen course at any time during the year, and may take up to four years to complete the course. This flexibility allows individuals to pursue their studies at a pace that meets their training needs with maximum convenience. Modules can be taken as part of a Continuing Professional Development portfolio while accumulating credits towards a postgraduate qualification.

The Awards

The programme consists of three Masters level courses, which include:

- MSc in Environmental Strategy
- MSc in Sustainable Development
- MSc in Corporate Environmental Management

MSc in Environmental Strategy

The Environmental Strategy course provides a theoretical and practical framework for understanding and evaluating environmental problems, and teaches techniques including Life Cycle Assessment (LCA) and Risk Assessment for analysing and solving environmental problems. The strategic emphasis differentiates the course from mainstream environmental management courses in that possible future environmental scenarios are envisioned and anticipated so as to plan beyond legislative compliance for a sustainable future.

MSc in Sustainable Development

This course seeks to provide an interdisciplinary training that will enable students to be fully conversant with the various constituents of sustainable development. In doing so it aims to equip participants with the conceptual and analytical tools they need to address the growing importance of incorporating ethical dimensions, economic prudence, social awareness and environmental principles as the cornerstones of development. The course has been conceived primarily for those already working or seeking to work in government and non-government organisations.

MSc in Corporate Environmental Management

The course provides an interdisciplinary training that will enable candidates to combine their understanding of the business setting with commitment in social and environmental stewardship associated with their activities. On completion of this course students will have gained an appreciation and understanding of the complex ethical issues involved with environmental management and participated in rigorous discussions of case studies of environmental management. The course has been conceived primarily for those working, or seeking employment, in private firms to provide support in designing and implementing corporate strategies.

Programme Structure

The programme of study is structured into a flexible format with modules offered as a series of intensive one-week lectures, seminars and practical exercises, supported by independent learning material. Each module is self-contained and individually assessed. The assessment normally comprises written work, project work, and/or some group work, and is designed to be completed in the student's own time after the module week.

Each MSc course includes eight modules and a closely supervised MSc dissertation. Each course consists of four core modules and four electives that students choose from modules within CES, Materials and other partner institutions.

Full-time students who wish to gain work experience in their chosen sector or field of interest will be assigned a placement (internship) which counts as a full credit module.



Outline Structure of the Masters Courses

Environmental Strategy

4 Core Modules (15 Credits each)

- Life Cycle Approaches
- Values, Ethics & Sustainability
- Environmental Law
- Environmental Science & Society

4 Elective Modules (15 Credits each)

- List of remaining modules
- Up to two modules can be taken at partner institutions
- May include an internship

MSc Dissertation (60 Credits)

- Independent Research Project

Sustainable Development

4 Core Modules (15 Credits each)

- Sustainable Development
- Values, Ethics & Sustainability
- Corporate Social and Environmental Responsibility
- Environmental Economics

4 Elective Modules (15 Credits each)

- List of remaining modules
- Up to two modules can be taken at partner institutions
- May include an internship

MSc Dissertation (60 Credits)

- Independent Research Project

Corporate Env. Management

4 Core Modules (15 Credits each)

- Sustainable Development
- Environmental Management Systems & Auditing
- Environmental Law
- Corporate Social and Environmental Responsibility

4 Elective Modules (15 Credits each)

- List of remaining modules
- Up to two modules can be taken at partner institutions
- May include an internship

MSc Dissertation (60 Credits)

- Independent Research Project

The Modules

Currently there are eleven modules running in CES. Together with other modules in the School of Engineering, and the Environment and Energy programme at City University, there are a total number of 23 modules that a student can choose from. Modules offered in CES are listed below:

Life Cycle Approaches (LCA)

Provides an introduction to life cycle thinking, principles and practice of applying LCA. Case studies constitute an important element of the module to help develop environmental performance indicators and how to use them to inform environmental decision-making. Students are introduced to various LCA computer softwares, and undertake exercises to give them hands-on experience.

Environmental Science and Society

This module introduces basic environmental science concepts. Specific topics covered include: thermodynamics of ecosystems and human systems; ecology and biodiversity; pollution science; the science of climate change; the science of ozone depletion; scientific approaches to environmental risk; science and technology; science and human behaviour; scientific uncertainty; and the precautionary principle.

Environmental Law

Understanding the structure of key environmental laws in the UK and EU covering waste, water and atmospheric pollution constitutes an important element of this module. Judicial and court-room procedures in the context of environmental claims are explored. Students are familiarised with the rules of evidence, preparing and presenting evidence as an expert witness.

Values, Ethics and Sustainability

Explores how individuals and groups within society conceptualise and find value through, or derive value from, the environment whether through economic activities, political processes, social or religious pursuits or philosophical inquiry. The module examines a variety of perspectives on environmental values to consider how valuations of the environment have transpired from a number of philosophies as well as events over time and space.

Internship (Industrial Placement)

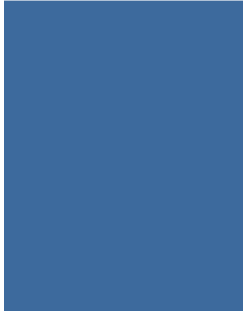
The internship is intended to complement the students' academic work with valuable practical experience in industry, government agencies, NGOs or research centres. Students work on specific projects and have the opportunity to use and test some of the analytical skills acquired from other modules. Students will spend between six to eight weeks during the second semester on placement.

Sustainable Development

The module provides a critical understanding of the concept of sustainable development and the various constituents that contribute to the achievement of its core principles. The module explores the importance of integrating physical sciences and engineering with the biological and social sciences as the basis for a fundamental redesign of both technological and social processes to address an array of global and local concerns.

Environmental Management Systems & Auditing

This module aims to enable students to understand and develop appropriate environmental policies, and to appreciate and work with Environmental Management Systems (EMSs). Further, this module aims to provide insight into the role of environmental tools for problem-solving and decision-making in a complex environment with conflicting objectives.



Integrated Assessment

This module aims to explore the interface between scientific evaluations of environmental impacts and their use in policy decision processes, primarily by engaging participants in a case study. The module provides an introduction to judgement and decision making and experience of working in project teams. The main objective is to give participants an insight into the practical implications of working on decision support problems a) with clients as a consultant and b) as a policy maker needing to make judgements about the adequacy of scientific evidence as a basis for taking action.

Environmental Economics

Provides an understanding of the basic environmental economic principles and concepts in relation to sustainable development. The module explores the use of valuation tools to measure environmental costs and benefits, and makes sense of the position of economics within the broader environmental arena. Students will engage in economically oriented environmental discussions and deliberate on relevant case studies of environmental problems.

Corporate Social and Environmental Responsibility

Provides an understanding of contemporary environmentalism. The module evaluates and discusses the way environmental concerns have affected organisations in the private sector, and how organisations have affected the content, shape and direction of the environmental debate. Particular emphasis will be placed on corporate environmental strategies, the distribution and organisation of environmental roles within an organisation as well as the industrial perspective towards industrial ecology and other recent environmental management concepts.

Environmental Management for Developing Countries

Provides an insight into the particular interactions that occur within societies in the developing world. The module pays specific attention to the issues of who uses the 'environment', who has control over the use of resources, and who is excluded from it. This issue of multiple actors, mediums and systems, which function within a variety of political, economic, social, historical and ecological conditions, will be discussed and debated.

There are twelve other materials, manufacturing and energy-related modules that students can choose from in the School of Engineering and at City University. Information on these can be provided upon enquiry.

Timetable

The autumn semester begins in mid September, and the spring semester starts in mid January. The long summer period is normally used for work on the MSc dissertation, which is submitted towards the second half of August. This one-year schedule mainly applies for full-time students. Part-time students can begin their programme of study at any time during the year when the module(s) of their choice is being offered. Exact dates for modules are available on the website: www.surrey.ac.uk/ces

Entry to the Programme

The normal requirement for entry to the programme is at least a good honours degree. There is no preference for any academic discipline given that environmental issues cut across disciplinary boundaries. The programme caters for interested and enthusiastic students from social sciences, engineering, humanities and life or physical sciences. Two letters of reference are also required. In exceptional circumstances, applicants who do not have a first degree are admitted onto the programme on the strength of their professional and work experience.

Overseas students for whom English is not their first language must produce a TOEFL score of at least 550 (213 on the computer-based test) or an IELTS score of at least 6. This should have been obtained within two years prior to the start date of the programme.

Career Prospects

Our graduates are well equipped with the specialist knowledge, transferable skills and practical experience necessary to follow a wide range of career paths within environmental consultancies, industry, non-government organisations, local and national government agencies, and to enrol in doctoral programmes. The Centre's extensive contact with industry, together with the Centre's growing reputation as a research and teaching institute, ensures that graduates have access to a wide range of employment opportunities.

What some students said:

"The MSc prepared me very well with the skills necessary to design and apply the best cost-effective solutions to deal with environmental and social issues, comply with standards and regulations, and promote sustainable resource and waste management strategies at all levels."

Ian Montagne, Mining Consultant, Peru

"The Masters course at CES equipped me with a unique set of sustainable development and environmental management tools, which have proven highly relevant for improving business performance. In my current position, I am fortunate enough to meet these challenges on an everyday basis."

Christine Tørklep, Socially Responsible Investment Analyst, Storebrand Investments

Application and Further Information

MSc Course Administrator
Centre for Environmental Strategy
School of Engineering (D3)
University of Surrey
Guildford, Surrey GU2 7XH, UK

Tel: +44 (0)1483 689047
Fax: +44 (0)1483 686671
Email: ces-pgt@surrey.ac.uk

www.surrey.ac.uk/ces